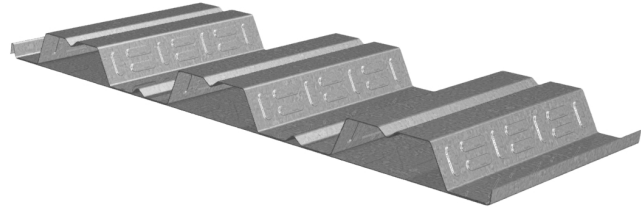


2VLP CELLULAR COMPOSITE DECK GRADE 50 STEEL

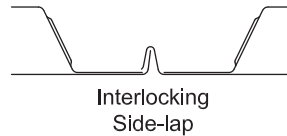
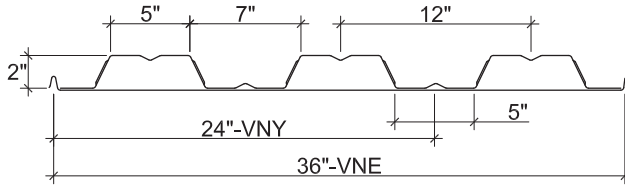
LRFD

2VLP CELLULAR COMPOSITE DECK

- 2VLP Deck used with TSWs or BPs
- 2PLVLP Deck used with PunchLok® II System



Nominal Dimensions



Plant	Cover Width	Pan Connection Method
VNY	24"	Flush Rivets (Underside)
VNE	36"	Resistance Welds

Section Properties

Deck Gage	Deck Weight w_{dd} (psf)	Base Metal Thickness t (in.)	Yield Strength F_y (ksi)	Effective Moment of Inertia at Service Load $I_d = (2I_e + I_g)/3$		Effective Section Modulus at $F_y = 50$ ksi		Design Moment		Vertical Web Shear ϕV_n (lb/ft)
				I_{d+} (in ⁴ /ft)	I_{d-} (in ⁴ /ft)	S_{e+} (in ³ /ft)	S_{e-} (in ³ /ft)	ϕM_{n+} (lb-ft/ft)	ϕM_{n-} (lb-ft/ft)	
20/20	3.3	0.0358/0.0358	50	0.670	0.491	0.369	0.303	1384	1136	3677
20/18	3.8	0.0358/0.0474	50	0.714	0.526	0.378	0.341	1418	1279	3677
18/20	3.9	0.0474/0.0358	50	0.854	0.635	0.547	0.432	2051	1620	4925
18/18	4.4	0.0474/0.0474	50	0.914	0.675	0.556	0.469	2085	1759	4925
18/16	5.0	0.0474/0.0598	50	0.967	0.716	0.565	0.511	2119	1916	4925
16/18	5.0	0.0598/0.0474	50	1.099	0.830	0.731	0.602	2741	2258	6185
16/16	5.6	0.0598/0.0598	50	1.165	0.877	0.742	0.643	2783	2411	6185

Design Reactions at Supports Based on Web Crippling, ϕR_n (lb/ft)

Deck Gage	Bearing Length of Webs											
	One-Flange Loading						Two-Flange Loading					
	End Bearing				Interior Bearing		End Bearing				Interior Bearing	
	1½"	2"	3"	4"	4"	6"	1½"	2"	3"	4"	4"	6"
20/XX	798	874	1002	1110	1634	1869	848	910	1015	1103	1997	2306
18/XX	1345	1467	1671	1843	2741	3117	1550	1656	1833	1982	3410	3914
16/XX	2071	2249	2548	2800	4202	4751	2530	2691	2962	3190	5287	6037

Standard Features

- ASTM A653 SS GR50 Min., with G60
- Standard lengths – 6'-0" to 42'-0"
- IAPMO UES ER-0652 and UL Listed
- Tables conform to ANSI/SDI C-2017

Optional Features

- Inquire regarding cost and lead times for:
 - Short Cuts < 6'-0"
 - Sheet Lengths > 42'-0"
 - Alternative metallic finishes
- Cellular Acoustical Versions

NOTICE: Design defects that could cause injury or death may result from relying on the information in this document without independent verification by a qualified professional. The information in this document is provided "AS IS". Nucor Corporation and its affiliates expressly disclaim: (i) any and all representations, warranties and conditions and (ii) all liability arising out of or related to this document and the information in it.